

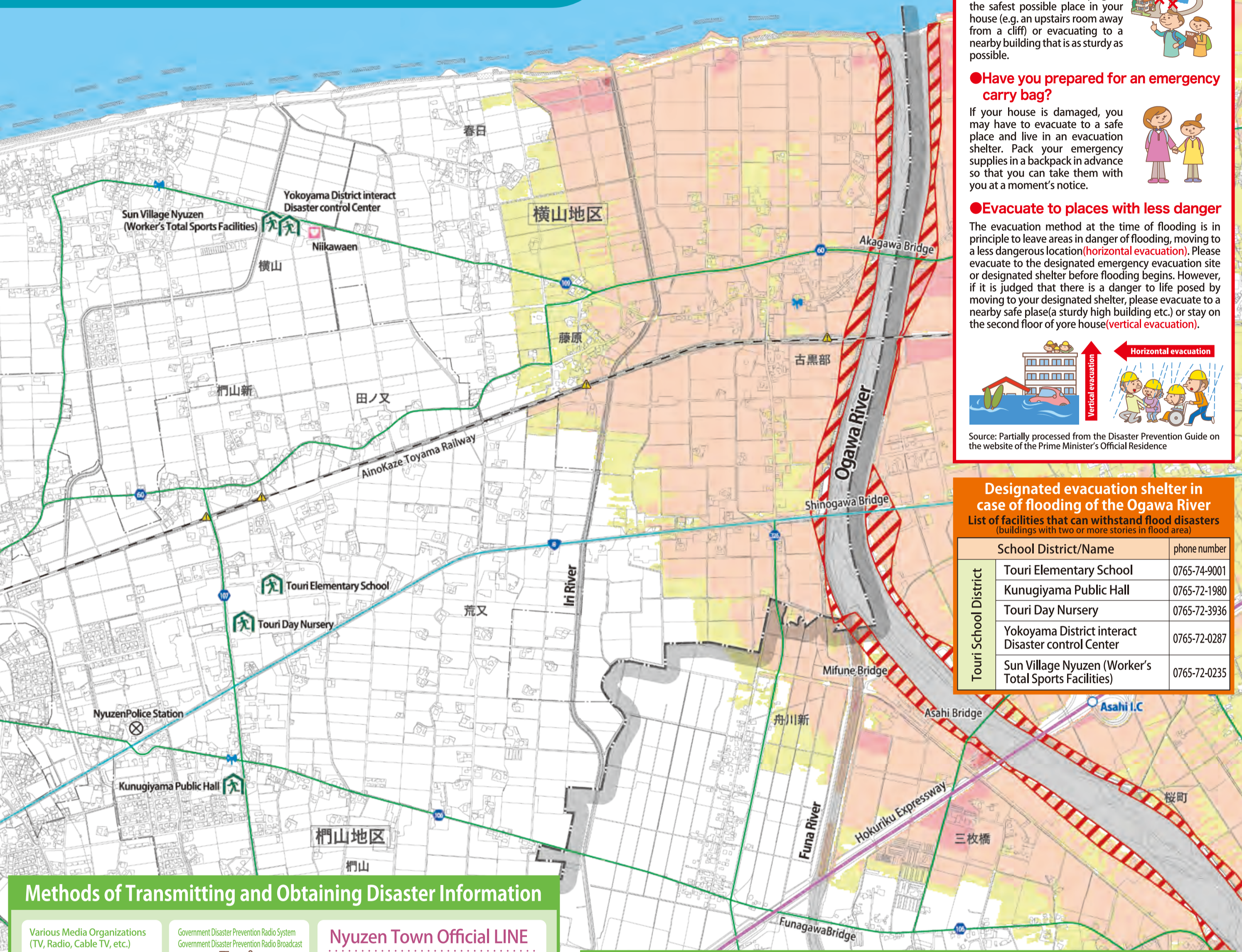
Nyuzenmachi Disaster Prevention Map

The Ogawa River Flood

New Edition, March 2026

This map summarizes information on the anticipated inundation areas, flood depths, and evacuation shelters in the event of a flood caused by the maximum possible rainfall in the Ogawa River basin. The assumed conditions are a total rainfall of 753.5 mm over 24 hours, which is estimated to occur approximately once every 1,000 years. (Disclosed by Toyama Prefectural Government in the 2025 fiscal year) Although the actual inundation from a flood may not necessarily match these predictions, each resident can use this map as a guide for evacuation.

●Published by Nyuzen Town (March 2026) ●Inquiries: General Affairs Division Phone: 0765-72-1100 (Main)



Welfare Evacuation Shelters in the Event of the Ogawa River Flood

These shelters are designated for individuals requiring special consideration, such as the elderly, individuals with disabilities, pregnant women, and infants, who may face difficulties in standard evacuation shelters. They are opened after general evacuation shelters, based on the extent of the disaster.

Name	phone number
Niikawaen	0765-74-2520

Precautions at the time of evacuation

●Get accurate information and take action early for evacuation route for evacuation
Check the latest weather information on TV, radio, the internet, etc. If evacuation information is issued, do not panic and evacuate immediately.

●Have you checked your evacuation site and route?
Check your evacuation site and route in advance so that if a disaster occurs, you can evacuate without panicking. If it is dangerous to travel to an evacuation site due to a storm or inundation, consider staying in the safest possible place in your house (e.g. an upstairs room away from a cliff) or evacuating to a nearby building that is as sturdy as possible.

●Have you prepared for an emergency carry bag?
If your house is damaged, you may have to evacuate to a safe place and live in an evacuation shelter. Pack your emergency supplies in a backpack in advance so that you can take them with you at a moment's notice.

●Evacuate to places with less danger
The evacuation method at the time of flooding is in principle to leave areas in danger of flooding, moving to a less dangerous location (horizontal evacuation). Please evacuate to the designated emergency evacuation site or designated shelter before flooding begins. However, if it is judged that there is a danger to life posed by moving to your designated shelter, please evacuate to a nearby safe place (a sturdy high building etc.) or stay on the second floor of your house (vertical evacuation).



Source: Partially processed from the Disaster Prevention Guide on the website of the Prime Minister's Official Residence

Designated evacuation shelter in case of flooding of the Ogawa River

List of facilities that can withstand flood disasters (buildings with two or more stories in flood area)

School District/Name	phone number
Touri Elementary School	0765-74-9001
Kunugiyama Public Hall	0765-72-1980
Touri Day Nursery	0765-72-3936
Yokoyama District Interact Disaster Control Center	0765-72-0287
Sun Village Nyuzen (Worker's Total Sports Facilities)	0765-72-0235

Methods of Transmitting and Obtaining Disaster Information

Various Media Organizations (TV, Radio, Cable TV, etc.)

Government Disaster Prevention Radio System (Government Disaster Prevention Radio broadcast)

Nyuzen Town Official LINE
Nyuzen Town distributes emergency information on earthquakes, tsunamis, etc., and weather warnings via the "Town Emergency Information Mail." The same information can also be received on the town's official LINE account. Please take advantage of this service.

Publicity Van

Early Warning Mail (Area Mail)

Early Warning

Nyuzen Town Emergency Information Mail
Nyuzen Town distributes emergency information on earthquakes, tsunamis, ballistic missile launches, weather warnings, weather advisories, fire information, crime prevention-bear appearance information, and information on your safety and security, via the "Nyuzen Town Emergency Information Mail." Please register for this information email.

Internet
[Toyama Prefecture Toyama Disaster Prevention website] [Ministry of Land, Infrastructure and Transport Palette Toyama] [For other disaster prevention information, click here.]
A wide range of disaster prevention information within Toyama Prefecture is provided.

Japan Meteorological Agency
The Japan Meteorological Agency will issue a hazard distribution map for municipalities where warnings have been announced, specifically highlighting areas where the risk of flooding is increasing. If a heightened risk is predicted in your area, please pay attention to evacuation information issued by Nyuzen Town, and take early action.

Kikikuru (Distribution of Warning Danger Levels)
The level of danger in areas can be checked.

Smart phone Apps
[NHK News-Disaster Prevention Apps] Disaster evacuation and weather information in the respective location can be checked.
[Yahoo! Disaster Prevention Information] Disaster information and other information can be passed on quickly.

About the Alert Levels

Starting in May 2026, weather warnings and advisories will undergo significant changes. The alert levels and evacuation actions to be taken by the town residents are divided into five levels* to provide information in an easy-to-understand manner. *Various types of information are not necessarily presented in the order of the alert levels. Please be aware that circumstances may change rapidly.

Alert Levels	Information Promoting Actions	Circumstances	Evacuation Actions to Be Taken by Residents
5	Emergency Safety Measures	Disaster occurrence/ Disaster impending	Life-threatening Immediately secure safety!
<Evacuate by alert level 4!>			
4	Evacuation Instruction	High risk of disaster	Every resident should evacuate from hazardous places.
3	Evacuation of the Elderly, Etc.	Risk of disaster	The elderly and others should evacuate from dangerous places.
2	Advisory (Heavy rain, Flood), etc.	Weather worsening	Confirm your evacuation actions using the hazard map, etc.
1	Probability of Warnings	Risk of weather worsening	Increase preparedness for disasters.

Note: The Japan Meteorological Agency will issue Alert Levels 1 and 2. The municipal mayors will issue Alert Levels 3, 4, and 5. Alert level 5 is not always issued because the disaster situation may not be reliably assessed. Note: Various types of information are not always issued in the order of the alert levels. Please note that there are cases where the situations may suddenly change. Major changes starting in May 2026. *The term "Level" is added to names of information, such as warnings and advisories. *The method for reporting the river flood risk level will change. (Special warnings will be newly added.) Information indicating "A level equivalent to Alert Level 4" will be issued as a "Danger Warning."

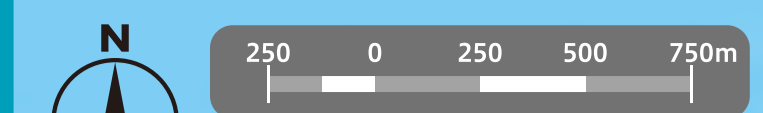
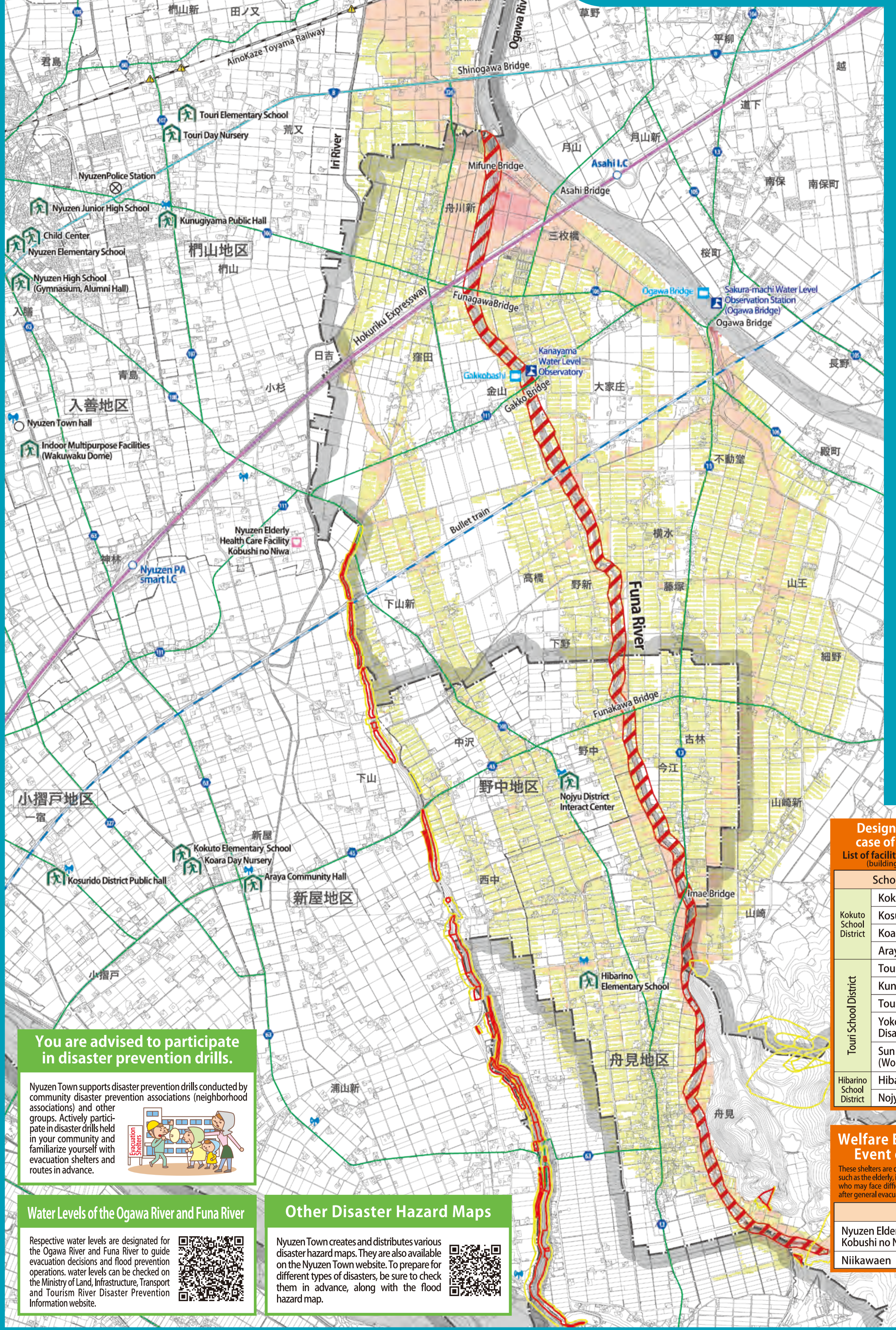
Nyuzenmachi Disaster Prevention Map

The Funa River Flood

New Edition, March 2026

This map summarizes information on the anticipated inundation areas, flood depths, and evacuation shelters in the event of a flood caused by the maximum possible rainfall in the Funa River basin. The assumed conditions are a total rainfall of 813 mm over 24 hours, which is estimated to occur approximately once every 1,000 years. (Disclosed by Toyama Prefectural Government in the 2025 fiscal year) Although the actual inundation from a flood may not necessarily match these predictions, each resident can use this map as a guide for evacuation.

●Published by Nyuzen Town (March 2026) ●Inquiries: General Affairs Division Phone: 0765-72-1100 (Main)



Legend

- Designated emergency evacuation area
- Welfare evacuation center
- Disaster management administration radio
- Water Level Station-Crisis Management Type Water Level Gauge
- Live River Cameras
- Underpass
- Hokuriku Expressway
- National Highway
- Prefectural road
- Bullet train
- Railway
- City and town boundaries
- District border

Click here for facilities to be used by individuals requiring special considerations (list).

Information on inundation

Inundation depth

5m~10m
3m~5m
0.5m~3m
under 0.5m

Potential flood area, including collapse of houses

Bank erosion
Areas where there is a danger of river channel erosion that may cause houses to collapse.

Estimate of inundation depth

Over 5.0 meters (Inundation above the floor of the 3rd floor)	Over 3 meters (Early evacuations required)
Over 3.0~5.0 meters (Inundation above the floor of the 2nd floor)	
Over 0.5~3.0 meters (Inundation above the floor of the 1st floor)	
under 0.5 meters (Inundation to the extent of below the floor of the 1st floor)	

Information on sediment-related disaster

- Sediment Disaster Alert Areas
- Sediment Disaster Special Alert Areas

Designated evacuation shelter in case of flooding of the Funa River

List of facilities that can withstand flood disasters (buildings with two or more stories in flood area)

School District/Name	phone number
Kokuto Elementary School	0765-78-0602
Kosurido District Public hall	0765-78-0044
Koara Day Nursery	0765-78-2629
Araya Community Hall	0765-78-1288
Touri Elementary School	0765-74-9001
Kunugiyama Public Hall	0765-72-1980
Touri Day Nursery	0765-72-3936
Yokoyama District Interact Disaster Control Center	0765-72-0287
Sun Village Nyuzen (Worker's Total Sports Facilities)	0765-72-0235
Hibarino Elementary School	0765-78-1200
Nojyu District Interact Center	0765-78-1327

Welfare Evacuation Shelters in the Event of the Funa River Flood

These shelters are designated for individuals requiring special consideration, such as the elderly, individuals with disabilities, pregnant women, and infants, who may face difficulties in standard evacuation shelters. They are opened after general evacuation shelters, based on the extent of the disaster.

Name	phone number
Nyuzen Elderly Health Care Facility Kobushi no Niwa	0765-78-2500
Niikawaen	0765-74-2520

You are advised to participate in disaster prevention drills.

Nyuzen Town supports disaster prevention drills conducted by community disaster prevention associations (neighborhood associations) and other groups. Actively participate in disaster drills held in your community and familiarize yourself with evacuation shelters and routes in advance.

Water Levels of the Ogawa River and Funa River

Respective water levels are designated for the Ogawa River and Funa River to guide evacuation decisions and flood prevention operations. Water levels can be checked on the Ministry of Land, Infrastructure, Transport and Tourism River Disaster Prevention Information website.

Other Disaster Hazard Maps

Nyuzen Town creates and distributes various disaster hazard maps. They are also available on the Nyuzen Town website. To prepare for different types of disasters, be sure to check them in advance, along with the flood hazard map.