

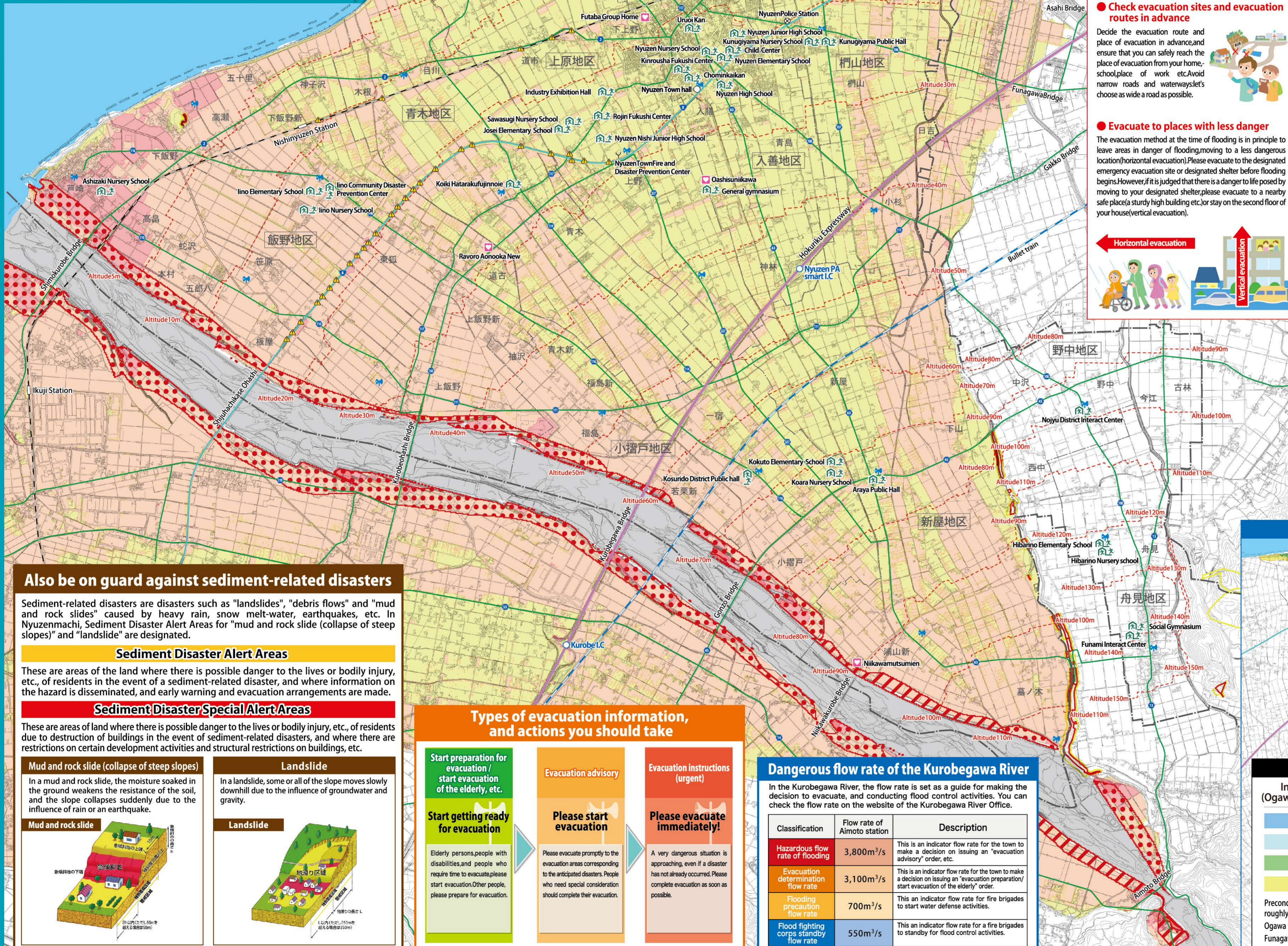
# Nyuzenmachi Disaster Prevention Map

## The Kurobegawa River Flood

This map is a summary of information such as assumed areas of inundation, flooding depth, evacuation places etc., corresponding to the projected levels of flooding of the Kurobe River in the event of the maximum amount of rainfall which can be expected in the Kurobe River basin. The prerequisite for this is a rainfall of 704 mm over 48 hours, which is said to happen about once in 1,000 years (Published by the Kurobe River Office in 2016). In addition, as reference information, we have also indicated inundated areas and flooding depth due to the flooding of Ogawa and Funagawa Rivers (2007, published in Toyama prefecture).

Although flooding caused by actual floods may not necessarily coincide with the projected flooding below, please use this as a guide for evacuation.

- Published by Nyuzenmachi (March 2018)
- Inquiries: General Affairs Division, Phone no.: 0765-72-1100



### Also be on guard against sediment-related disasters

Sediment-related disasters are disasters such as "landslides", "debris flows" and "mud and rock slides" caused by heavy rain, snow melt-water, earthquakes, etc. In Nyuzenmachi, Sediment Disaster Alert Areas for "mud and rock slide (collapse of steep slopes)" and "landslide" are designated.

#### Sediment Disaster Alert Areas

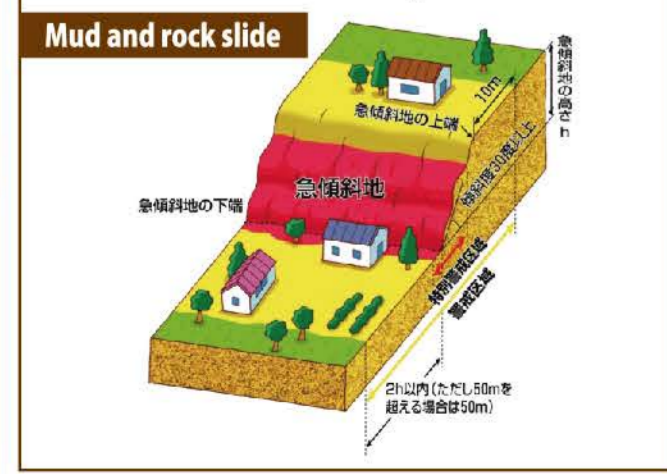
These are areas of the land where there is possible danger to the lives or bodily injury, etc., of residents in the event of a sediment-related disaster, and where information on the hazard is disseminated, and early warning and evacuation arrangements are made.

#### Sediment Disaster Special Alert Areas

These are areas of land where there is possible danger to the lives or bodily injury, etc., of residents due to destruction of buildings in the event of sediment-related disasters, and where there are restrictions on certain development activities and structural restrictions on buildings, etc.

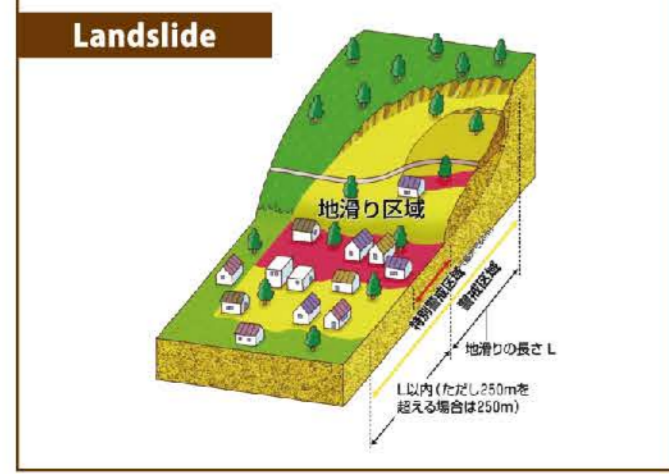
##### Mud and rock slide (collapse of steep slopes)

In a mud and rock slide, the moisture soaked in the ground weakens the resistance of the soil, and the slope collapses suddenly due to the influence of rain or an earthquake.



##### Landslide

In a landslide, some or all of the slope moves slowly downhill due to the influence of groundwater and gravity.



### Types of evacuation information, and actions you should take

<p><b>Start preparation for evacuation / start evacuation of the elderly, etc.</b></p> <p><b>Start getting ready for evacuation</b></p> <p>Elderly persons, people with disabilities, and people who require time to evacuate, please start evacuation. Other people, please prepare for evacuation.</p>	<p><b>Evacuation advisory</b></p> <p><b>Please start evacuation</b></p> <p>Please evacuate promptly to the evacuation areas corresponding to the anticipated disasters. People who need special consideration should complete their evacuation.</p>	<p><b>Evacuation instructions (urgent)</b></p> <p><b>Please evacuate immediately!</b></p> <p>A very dangerous situation is approaching, even if a disaster has not already occurred. Please complete evacuation as soon as possible.</p>
--	---	--

### Dangerous flow rate of the Kurobegawa River

In the Kurobegawa River, the flow rate is set as a guide for making the decision to evacuate, and conducting flood control activities. You can check the flow rate on the website of the Kurobegawa River Office.

Classification	Flow rate of Aimoto station	Description
Hazardous flow rate of flooding	3,800m <sup>3</sup> /s	This is an indicator flow rate for the town to make a decision on issuing an "evacuation advisory" order, etc.
Evacuation determination flow rate	3,100m <sup>3</sup> /s	This is an indicator flow rate for the town to make a decision on issuing an "evacuation preparation/start evacuation of the elderly" order.
Flood precaution flow rate	700m <sup>3</sup> /s	This is an indicator flow rate for fire brigades to start water defense activities.
Flood fighting corps standby flow rate	550m <sup>3</sup> /s	This is an indicator flow rate for fire brigades to standby for flood control activities.

### Precautions at the time of evacuation

- **Get accurate information and take action early for evacuation**  
Check the latest weather information on TV, radio, Internet, etc., and evacuate ahead of time if you feel you are in danger.
- **Put on easy-to-move and safe clothes**  
Put your belongings in a rucksack and ensure your hands can be used freely. Avoid boots and evacuate with athletic shoes.
- **Check evacuation sites and evacuation routes in advance**  
Decide the evacuation route and place of evacuation in advance, and ensure that you can safely reach the place of evacuation from your home, school, place of work, etc. Avoid narrow roads and waterways; let's choose as wide a road as possible.
- **Evacuate to places with less danger**  
The evacuation method at the time of flooding is in principle to leave areas in danger of flooding, moving to a less dangerous location (horizontal evacuation). Please evacuate to the designated emergency evacuation site or designated shelter before flooding begins. However, if it is judged that there is a danger to life posed by moving to your designated shelter, please evacuate to a nearby safe place (a sturdy high building etc.) or stay on the second floor of your house (vertical evacuation).



### Legend

- Designated emergency evacuation area
- Designated evacuation shelter
- Welfare evacuation center
- Disaster management administration radio
- Underpass
- Hokuriku Expressway
- National Highway
- Railway
- City and town limits
- Prefectural road
- Bullet train
- District border

### Information on inundation

Inundation depth (the Kurobegawa River)

- 10m and above
- 5m~10m
- 3m~5m
- 0.5m~3m
- under 0.5m

Potential flood area, including collapse of houses

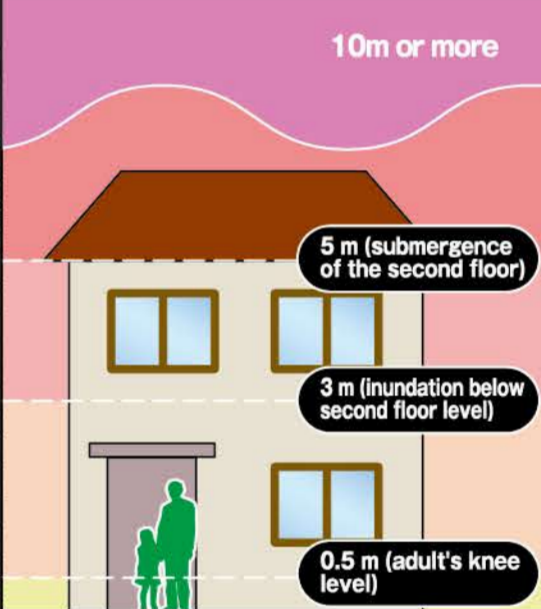
- Inundation of flood water\*1
- Bank erosion\*2

Information on sediment-related disaster

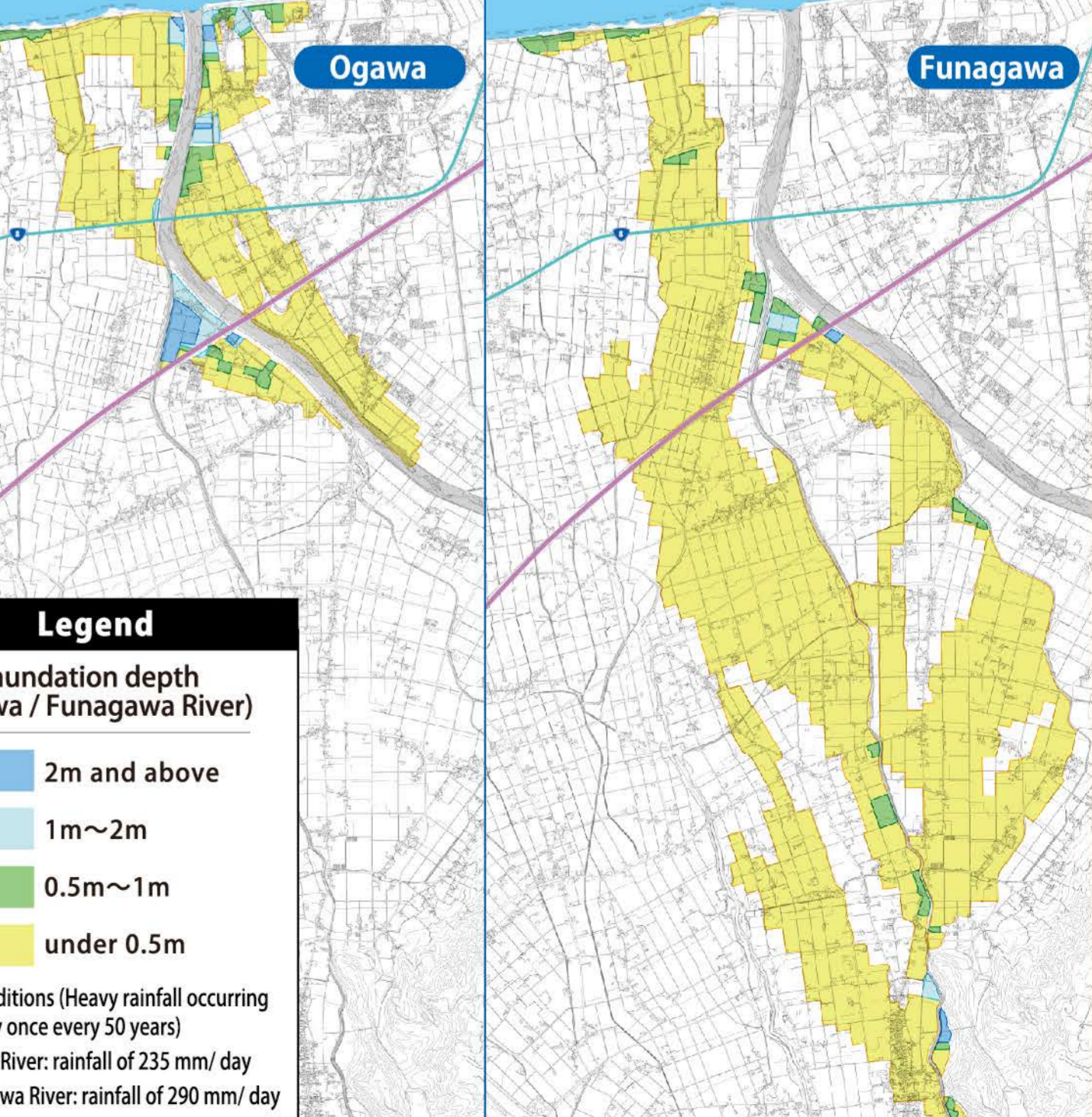
- Sediment Disaster Alert Areas
- Sediment Disaster Special Alert Areas

\*1 Areas where an embankment collapse may occur, resulting in a flood plume that could cause wooden houses to collapse.  
\*2 Areas where there is a danger of river channel erosion that may cause houses to collapse.

### Estimate of inundation depth



### The Ogawa / Funagawa Rivers Potential Flood Area Map



### Legend

Inundation depth (Ogawa / Funagawa River)

- 2m and above
- 1m~2m
- 0.5m~1m
- under 0.5m

Preconditions (Heavy rainfall occurring roughly once every 50 years)  
Ogawa River: rainfall of 235 mm/ day  
Funagawa River: rainfall of 290 mm/ day

### Designated Emergency Evacuation Site and designated evacuation shelter

School District / Name	phone number
Nyuzen School District	
Nyuzen Elementary School	0765-72-1114
Nyuzen Junior High School	0765-72-1117
Nyuzen High School (Gymnasium, Martial Arts Center, Alumni Hall)	0765-72-1145
General gymnasium	0765-74-2500
Uruoi Kan	0765-72-0123
Chominkaikan	0765-72-1105
Kinrousha Fukushima Center	0765-72-4264
Child Center	0765-72-1990
Nyuzen Nursery School	0765-72-0134
Josei School District	
Josei Elementary School	0765-72-0164
Nyuzen Nishi Junior High School	0765-72-4770
Industry Exhibition Hall	0765-72-1087
Rojin Fukushima Center	0765-72-1740
Sawasugi Nursery School	0765-72-4100
Koiki Hatarakufujinnoie	0765-74-1089
Iino School District	
Iino Elementary School	0765-72-1030
Iino Community Disaster Prevention Center	0765-72-5723
Iino Nursery School	0765-72-1068
Ashizaki Nursery School	0765-76-0204
Kokuto Elementary School	0765-78-0602
Kosurido District Public hall	0765-78-0044
Koara Nursery School	0765-78-2629
Araya Public Hall	0765-78-1288
Tori Elementary School	0765-74-9001
Kunugiyama Public Hall	0765-72-1980
Kunugiyama Nursery School	0765-72-2766
Worker's Total Sports Facilities (Sun Village)	0765-72-0235
Tori School District	
Yokoyama District Interact Disaster control center	0765-72-0287
Yokoyama Nursery School	0765-72-1802
Hibarino School District	
Hibarino Elementary School	0765-78-1200
Funami Interact Center	0765-78-1350
Social Gymnasium	0765-78-2378
Hibarino Nursery school	0765-78-1210
Nojyu District Interact Center	0765-78-1327

### Welfare evacuation center

School District / Name	phone number
Nyuzen School District	
Futaba Group Home	0765-74-0901
Josei School District	
Oashisuniikawa	0765-74-0800
Iino School District	
Ravoro Aonooka New	0765-72-2248
Kokuto School District	
Niikawamutumsumien	0765-78-1131

In creating this map, we used a numerical map (basic national land information), the electronic national large-scale map (map information) issued by the Geospatial Information Authority of Japan with the approval of the director of the Institute (Approval number 2017 information, No. 1241).